

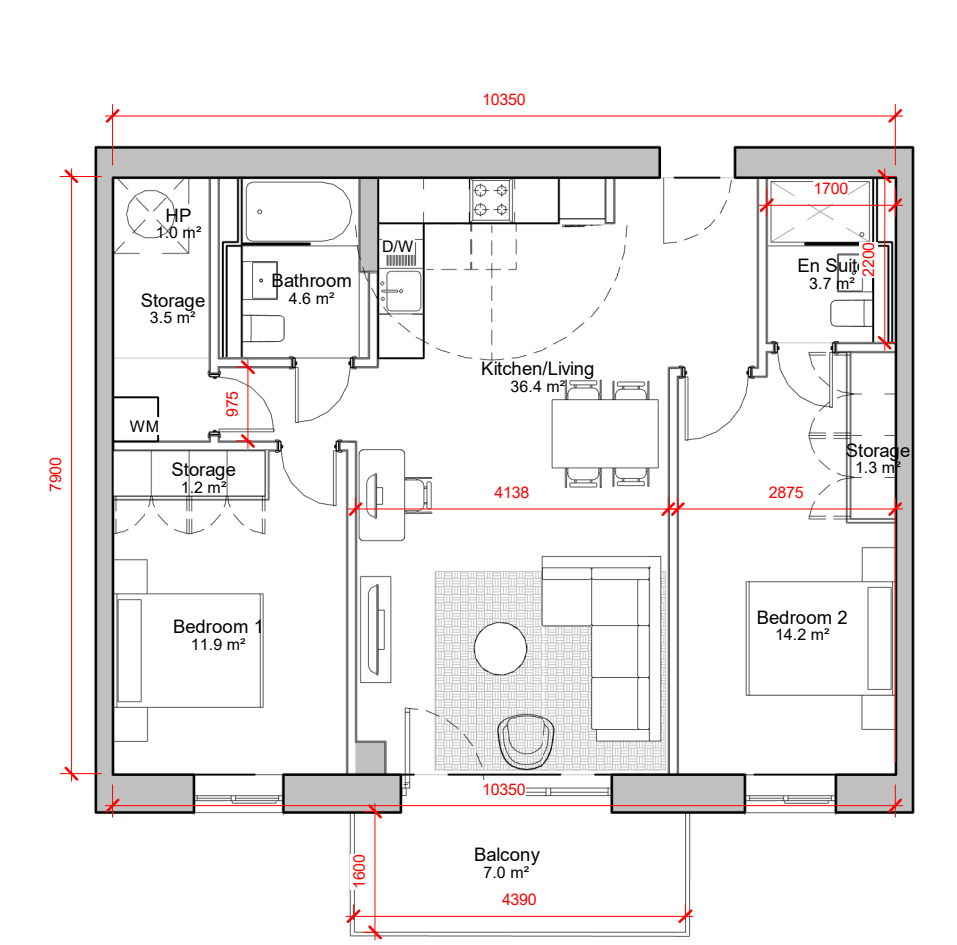
2 Bed - TYPE B3 - Room Schedule

Name	Area
Balcony	7.0 m ²
Bathroom	4.4 m ²
Bedroom 1	13.4 m ²
Bedroom 2	14.0 m ²
En Suite	3.7 m ²
HP	1.6 m ²
Kitchen/Living	35.7 m ²
Storage	6.7 m ²

2 Bed Apt - TYPE B3- Internal Area

Area	88.5 m ²
------	---------------------

9 **2 BED TYPE B3**
1 : 100



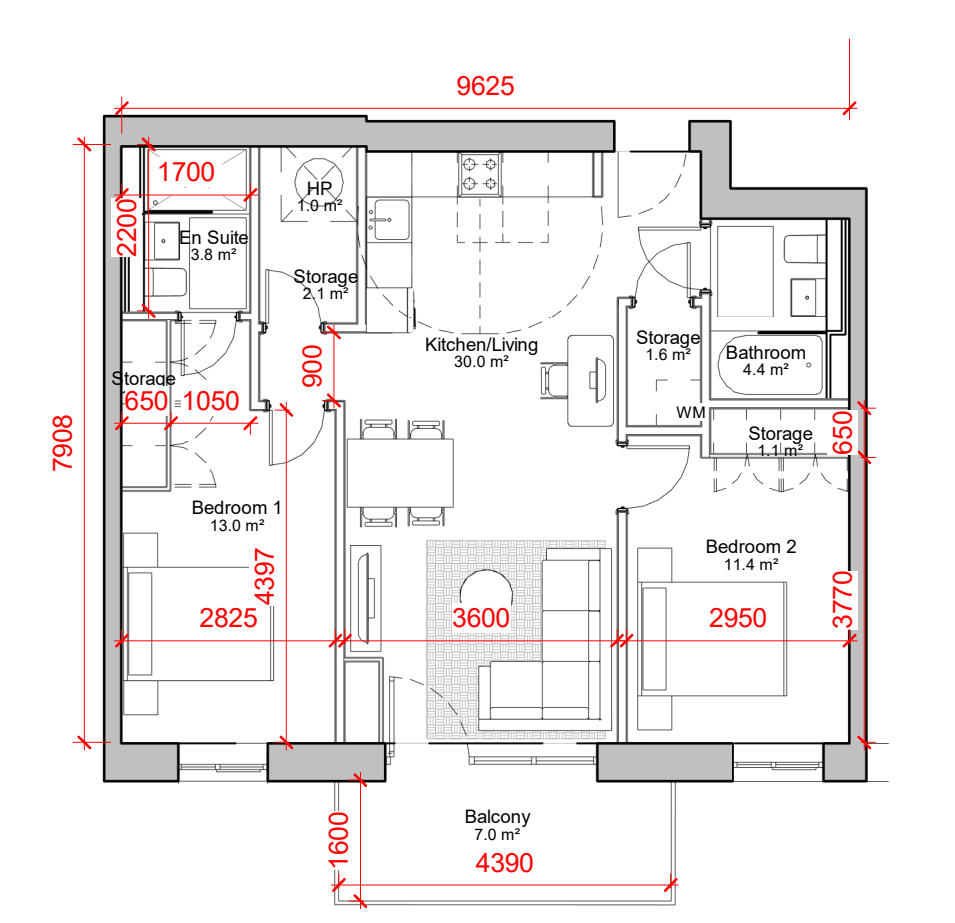
2 Bed - TYPE B4 - Room Schedule

Name	Area
Balcony	7.0 m ²
Bathroom	4.6 m ²
Bedroom 1	11.9 m ²
Bedroom 2	14.2 m ²
En Suite	3.7 m ²
HP	1.0 m ²
Kitchen/Living	36.4 m ²
Storage	6.0 m ²

2 Bed Apt - TYPE B4- Internal Area

Area	81.8 m ²
------	---------------------

1 **2 BED TYPE B4**
1 : 100



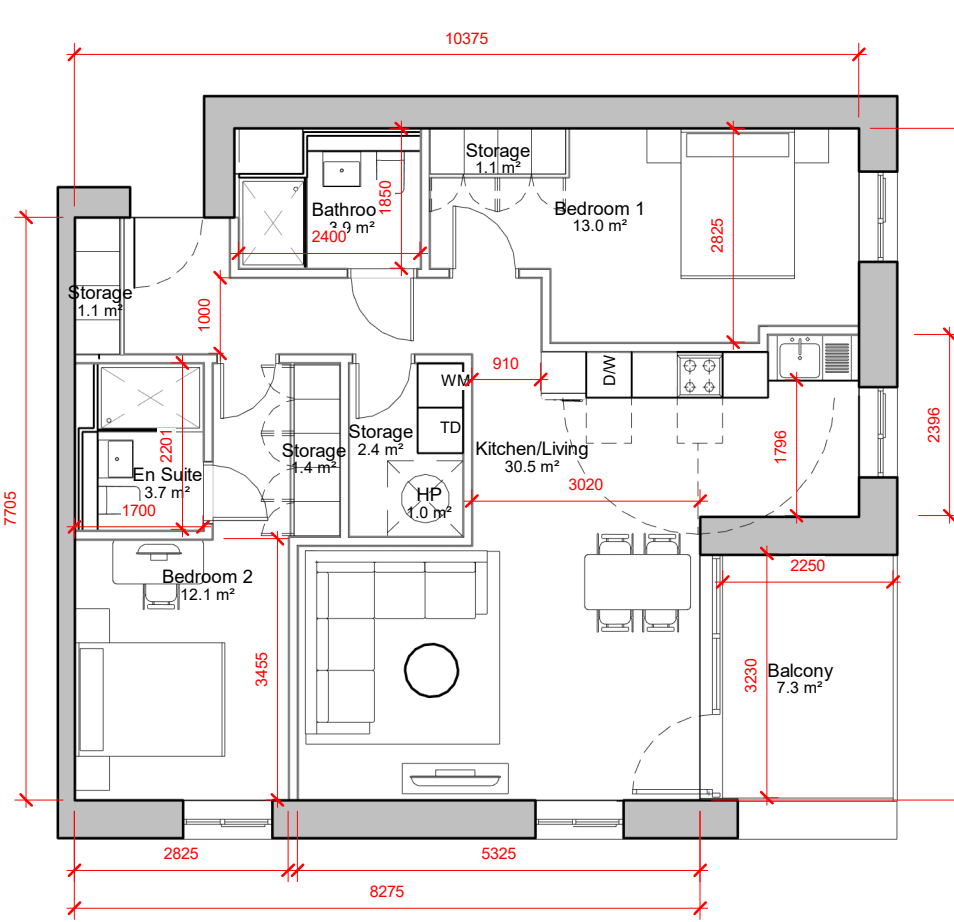
2 Bed - TYPE B6 - Room Schedule

Name	Area
Balcony	7.0 m ²
Bathroom	4.4 m ²
Bedroom 1	13.0 m ²
Bedroom 2	11.4 m ²
En Suite	3.8 m ²
HP	1.0 m ²
Kitchen/Living	30.0 m ²
Storage	6.1 m ²

2 Bed Apt - TYPE B6- Internal Area

Area	74.0 m ²
------	---------------------

2 **2 BED TYPE B6**
1 : 100



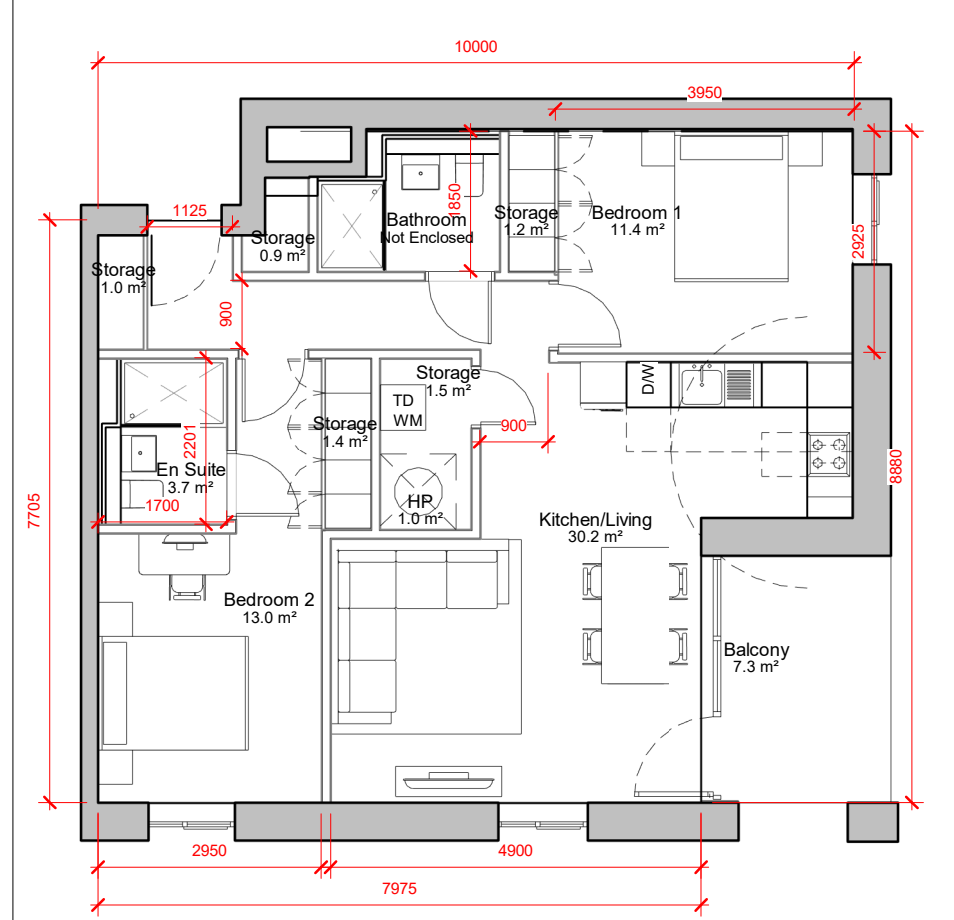
2 Bed - TYPE C - Room Schedule

Name	Area
Balcony	7.3 m ²
Bathroom	3.9 m ²
Bedroom 1	13.0 m ²
Bedroom 2	12.1 m ²
En Suite	3.7 m ²
HP	1.0 m ²
Kitchen/Living	30.5 m ²
Storage	6.0 m ²

2 Bed Apt - TYPE C- Internal Area

Area	81.2 m ²
------	---------------------

3 **2 BED TYPE C**
1 : 100



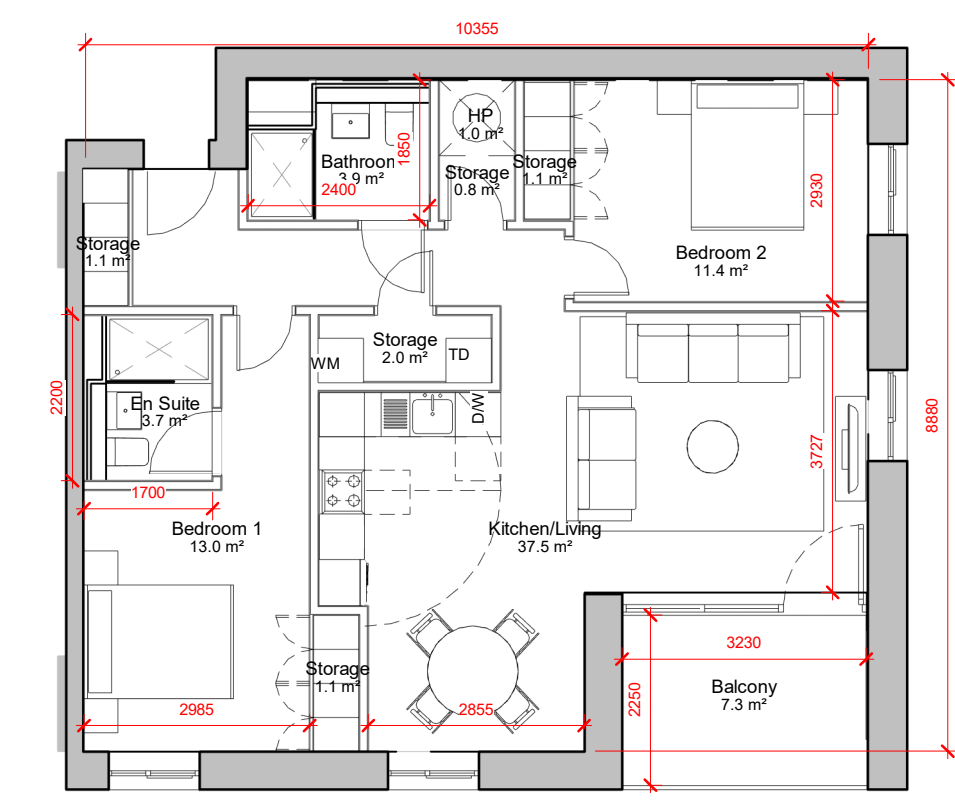
2 Bed - TYPE C2 - Room...

Name	Area
Balcony	7.3 m ²
Bathroom	0.0 m ²
Bedroom 1	11.4 m ²
Bedroom 2	13.0 m ²
En Suite	3.7 m ²
HP	1.0 m ²
Kitchen/Living	30.2 m ²
Storage	6.0 m ²

2 Bed Apt - TYPE C2- Internal Area

Area	78.0 m ²
------	---------------------

4 **2 BED TYPE C2**
1 : 100



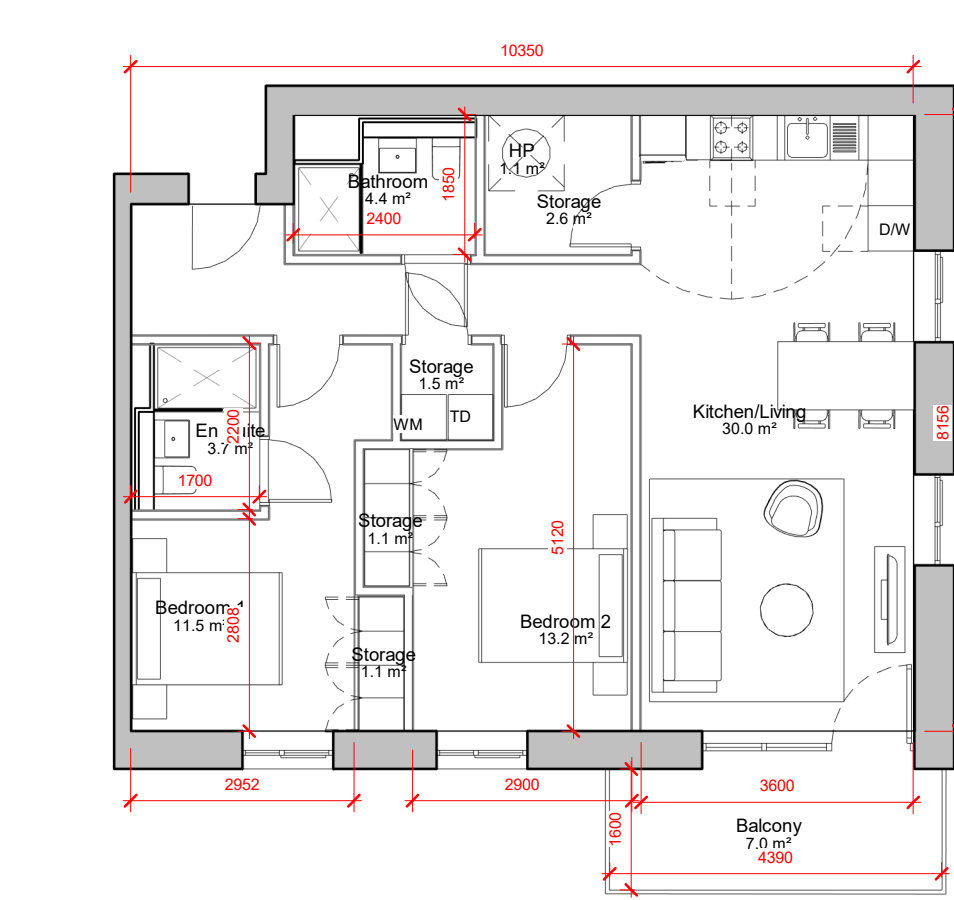
2 Bed - TYPE D - Room Schedule

Name	Area
Balcony	7.3 m ²
Bathroom	3.9 m ²
Bedroom 1	13.0 m ²
Bedroom 2	11.4 m ²
En Suite	3.7 m ²
HP	1.0 m ²
Kitchen/Living	37.5 m ²
Storage	6.1 m ²

2 Bed Apt - TYPE D- Internal Area

Area	81.1 m ²
------	---------------------

5 **2 BED TYPE D**
1 : 100



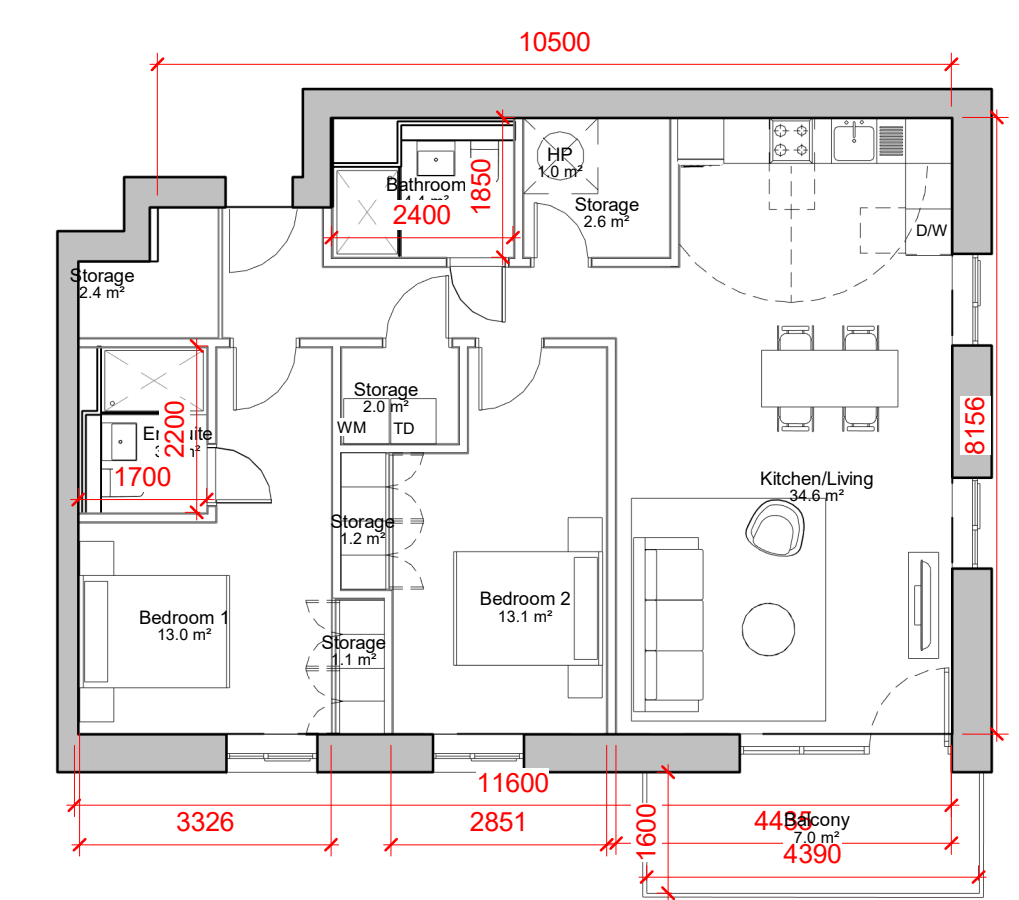
2 Bed - TYPE E - Room Schedule

Name	Area
Balcony	7.0 m ²
Bathroom	4.4 m ²
Bedroom 1	11.5 m ²
Bedroom 2	13.2 m ²
En Suite	3.7 m ²
HP	1.1 m ²
Kitchen/Living	30.0 m ²
Storage	6.2 m ²

2 Bed Apt - TYPE E- Internal Area

Area	81.8 m ²
------	---------------------

6 **2 BED TYPE E**
1 : 100



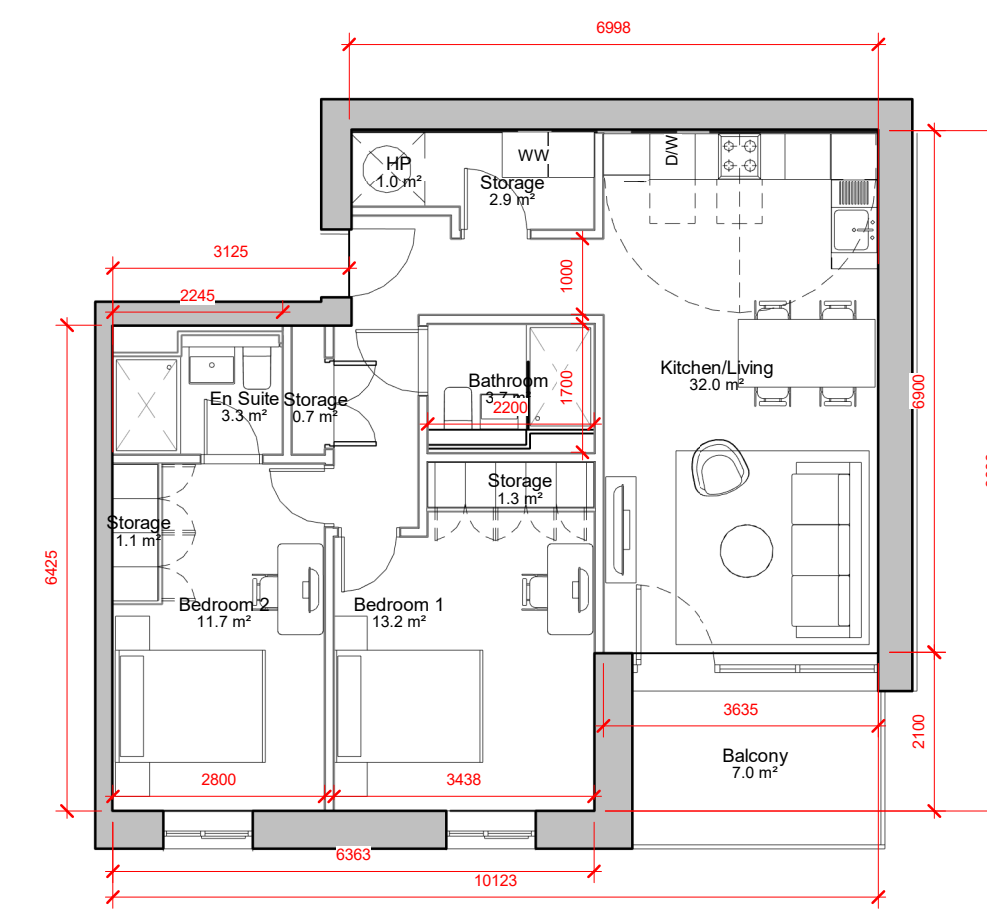
2 Bed - TYPE E2- Room Schedule

Name	Area
Balcony	7.0 m ²
Bathroom	4.4 m ²
Bedroom3	0.0 m ²
Bedroom 1	13.0 m ²
Bedroom 2	13.1 m ²
En Suite	3.7 m ²
HP	1.0 m ²
Kitchen/Living	34.6 m ²
Storage	9.4 m ²

2 Bed Apt - TYPE E2- Internal Area

Area	90.1 m ²
------	---------------------

10 **2 BED TYPE E2**
1 : 100



2 Bed - TYPE F - Room Schedule

Name	Area
Balcony	7.0 m ²
Bathroom	3.7 m ²
Bedroom 1	13.2 m ²
Bedroom 2	11.7 m ²
En Suite	3.3 m ²
HP	1.0 m ²
Kitchen/Living	32.0 m ²
Storage	6.0 m ²

2 Bed Apt - TYPE F- Internal Area

Area	75.1 m ²
------	---------------------

7 **2 BED TYPE F**
1 : 100

P1	18/06/2021	ISSUED FOR PLANNING	RC
REV	DATE	DESCRIPTION	CKH DRN

STATUS CODE DESCRIPTION
ISSUED FOR PLANNING APPROVAL

CLIENT
THE SHORELINE PARTNERSHIP

PROJECT
PROJECT SHORELINE BALDOYLE GA03

DRAWING
2 BED APARTMENTS

PROJECT NUMBER 950659	DATE 06/23/21
--------------------------	------------------

SCALE@ A1:
1 : 100

STATUS CODE: A1	DRAWING NUMBER 950659-P-1906	REVISION P1
--------------------	---------------------------------	----------------

Henry J Lyons

Architecture + Interiors
henrylyons.com

+353 1 888 3333
info@henrylyons.com

51-54 Pearse Street
Dublin D02 KA66